



RUBBER EXPANSION JOINTS

LT RUBBER MANUFACTURING SDN. BHD.

About LT Rubber



"Quality, Reliability & Satisfaction"

LT RUBBER MANUFACTURING SDN BHD

WE PROVIDE NOT ONLY PRODUCT BUY SOLUTION ...

Since 2006 LT Rubber Sdn Bhd has been manufacturing and supplying all type of quality rubber products for mining, automotive, building & infrastructure, food processing, engineering, marine, railway, furniture making and wholesale industries, just to name a few. We are the go-to company for rubber grommets, rubber chair tips, and more for manufacturers in Malaysia.

Our team of consulting experts are able to truly understand customers' needs, provide a cost competitive solution and full customer service before and after sale. We have our own rubber / DMC moulding and compounding facilities and out of our modern 3500 sqm factory we can provide a solution to almost any request as well as standard parts as listed in our catalogue.

LT Rubber Manufacturing Sdn Bhd is a leading manufacturer and exporter of custom made rubber moulded parts located in Malaysia. We are capable of producing all kind of rubber moulded products for various type of industrial sectors. Mainly automotive, car mat (full rubber & rubber backing carpet), electrical, electronic, water filter, all kind of seals, oil & gas industry and etc...

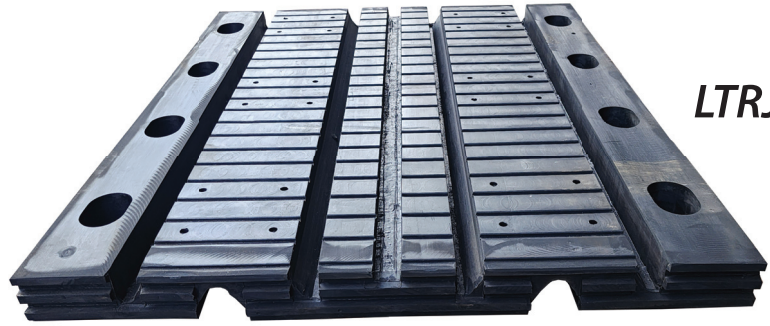
Beside general rubber moulded parts, we also produce rubber bonded to metal parts that meets OEM requirements.



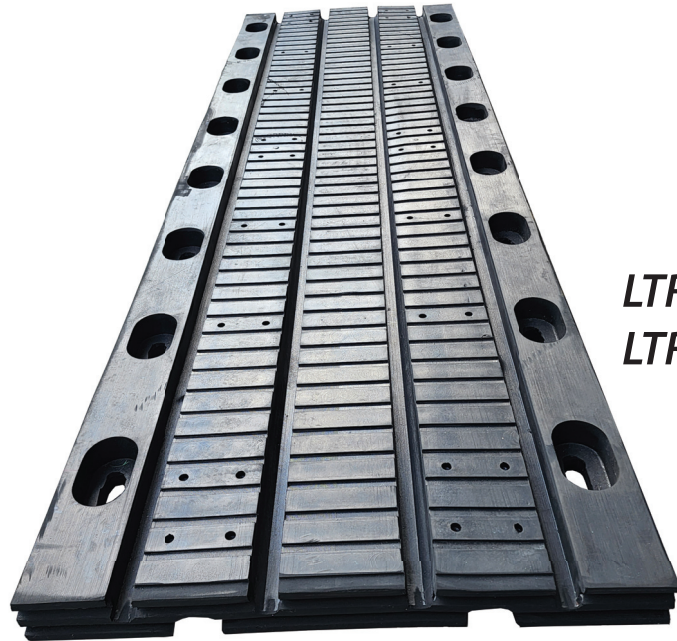
LTR Rubber Expansion Joints



LTRJ 50
LTRJ 65
LTRJ 80



LTRJ 200



LTRJ 100
LTRJ 165

Rubber Expansion Joints is a flexible connection designed to provide a smooth and continuous surface for vehicles to travel over.

It is designed to accommodate the movement and deformation of adjacent bridge components caused by temperature changes, seismic activity, wind loads, and other external factors.

The joint typically consists of a structural support system, which may be made of steel or aluminum, and a flexible element composed of high-strength elastomeric materials such as neoprene or natural rubber.

The flexible element is designed to provide a water-tight seal between adjacent bridge components while allowing for multidirectional movement and deformation.

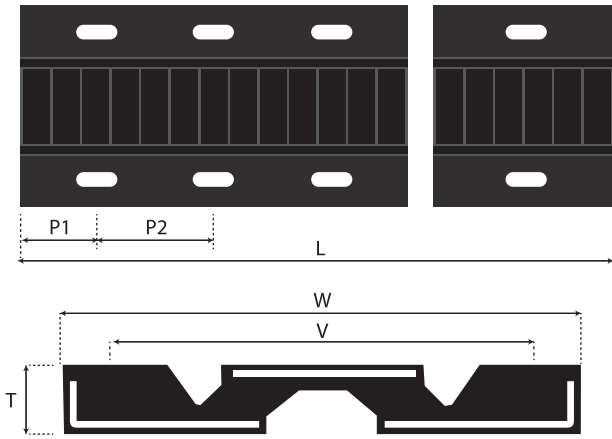
Proper installation, maintenance, and inspection of bridge rubber expansion joints are critical to ensure their functionality and longevity in preserving the structural integrity of the bridge.

LTR Rubber Expansion Joint is supplied in module lengths, designed to be bolted to the structural deck on either side of the expansion joint in the structure.

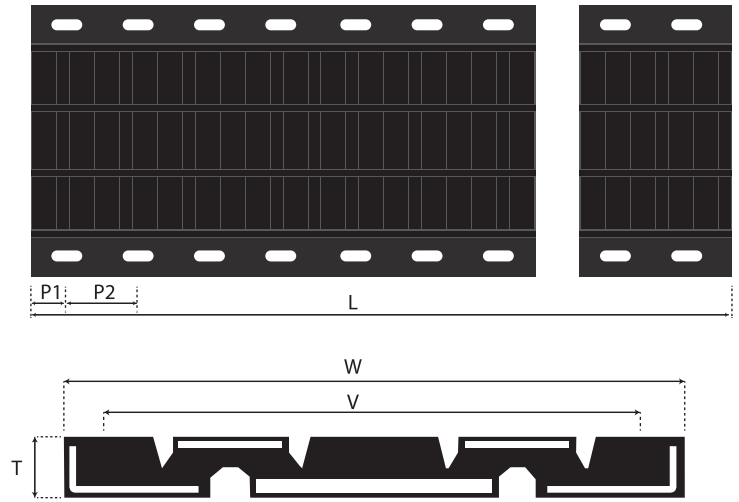


LTR Rubber Expansion Joints Model

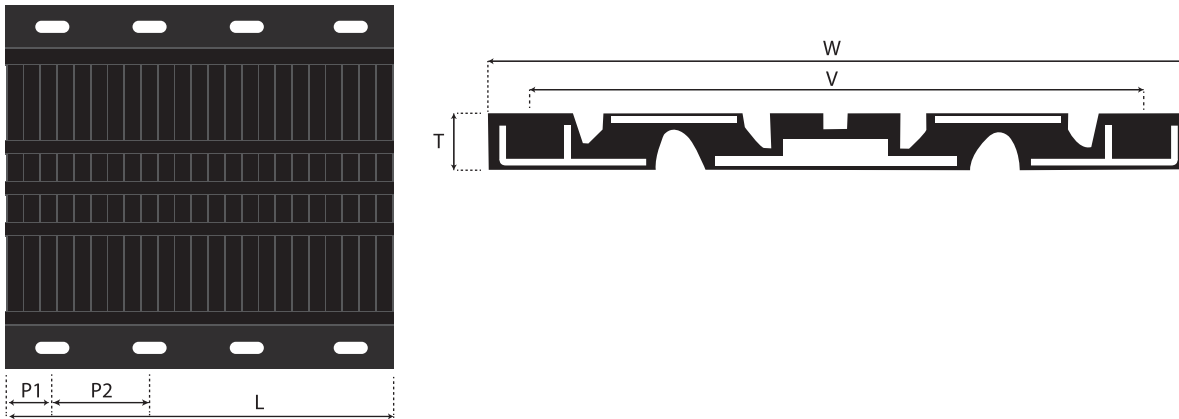
LTRJ 50 / LTRJ 65 / LTRJ 80



LTRJ 100 / LTRJ 165



LTRJ 200



Rubber Expansion Joints Specification :

Model	Movement (mm)	T (mm)	W (mm)	V (mm)	P1 (mm)	P2 (mm)	L (mm)	Stud (M)	Stud Length (mm)	Max Stud Height Above Shelf, (mm)	No. of Stud (pcs)	Weight (kG)
LTRJ50	50	40	274	200	100	200	2000	12	160	32	20	48
LTRJ65	65	46	356	280	160	335	2010	16	160	40	12	62
LTRJ80	80	52	432	335	195	230	2000	16	180	41	8	76
LTRJ100	102	54	593	500	160	240	2000	20	210	42	16	135
LTRJ165	165	75	725	615	163	335	2000	20	210	51	12	225
LTRJ200	200	69	800	700	135	250	1020	20	210	55	8	172

LTR Rubber Expansion Joints Model

Elastomer Properties :

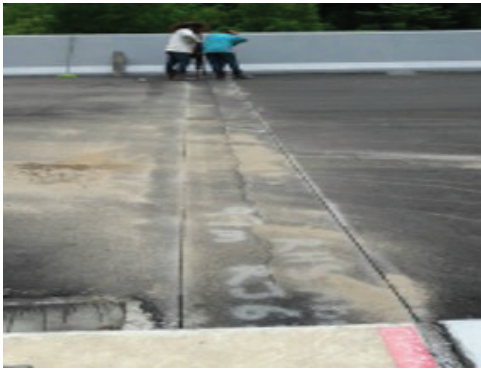
PROPERTIES	REQUIREMENTS		TEST METHOD
Hardness	60 ^o +/-5 ^o Shore A	55 ^o +/-5 ^o Shore A	ASTM D2240
Tensile Strength	14 Mpa, Min	14 Mpa, Min	ASTM D412
Elongation at Break	300%, Min	300%, Min	ASTM D412
Adhesion Strength	7 N/mm, Min	7 N/mm, Min	ASTM D429
Ozone Resistance 72 hrs @40°C, exposure to 25PPHM in air, under 20% Strain.	No Crack	No Crack	ASTM D1149
Compression Set 22 hrs @ 70°C	30% Max.	30% Max.	ASTM D395 Method B
Heat Aging, 70hrs @ 70°C Tensile Strength Loss,% Elongation Loss, % Hardness Change, Shore A	20% Max. 20% Max. 0 - +10	20% Max. 20% Max. 0 - +10	ASTM D412
Low Temperature Recovery, 72hrs @-10°C, 50% deflection.	88% Min.	88% Min.	ASTM D2628
Low Temperature Recovery, 22hrs @-29°C, 50% deflection.	83% Min.	83% Min.	ASTM D2628
High Temperature Recovery, 72hrs @70°C, 50% deflection.	85% Min.	85% Min.	ASTM D2628

Steel Properties :

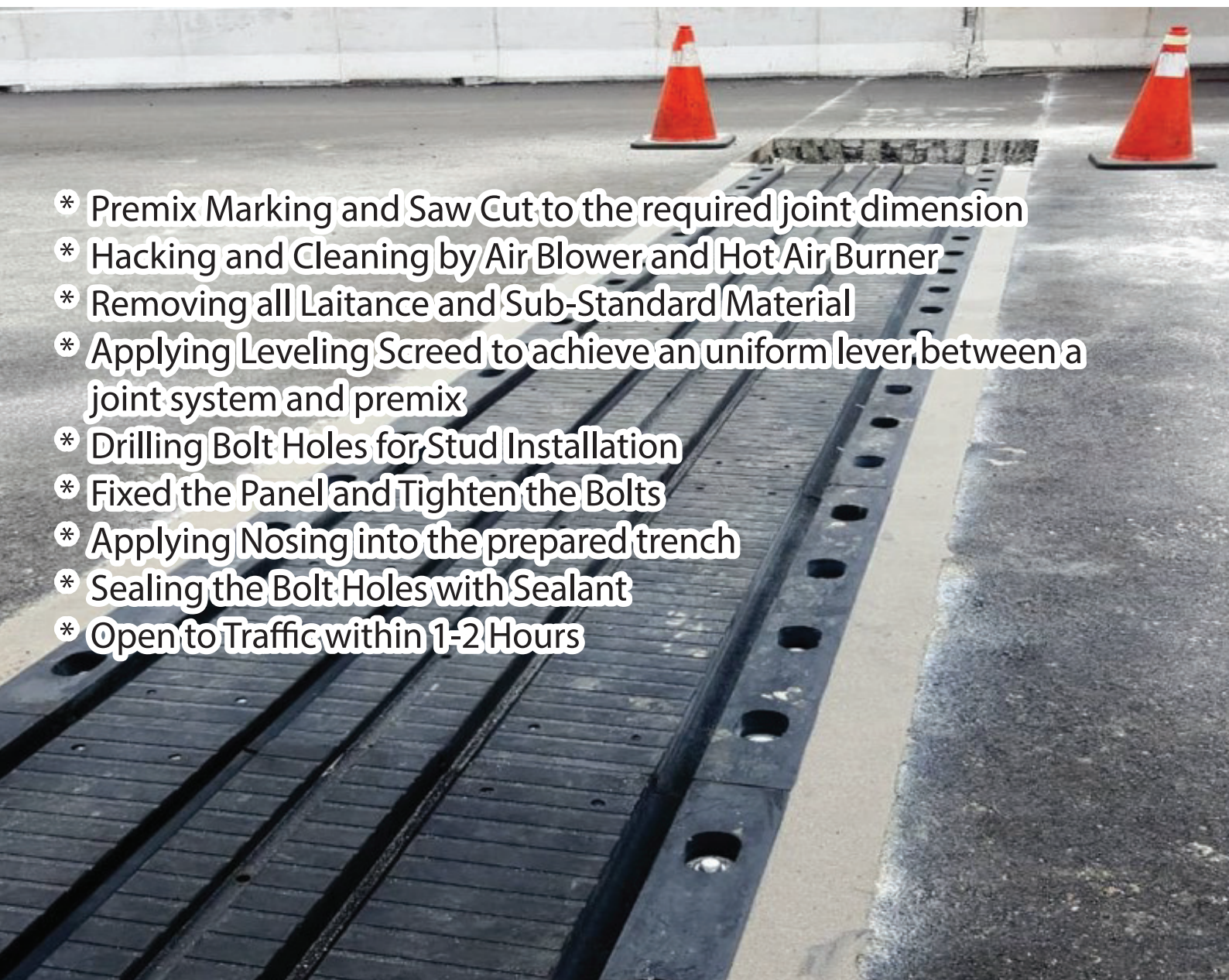
ASTM A36, BSEN S275JR, JIS SS400 or equivalent



Installation



- * Premix Marking and Saw Cut to the required joint dimension
- * Hacking and Cleaning by Air Blower and Hot Air Burner
- * Removing all Laitance and Sub-Standard Material
- * Applying Leveling Screed to achieve an uniform level between a joint system and premix
- * Drilling Bolt Holes for Stud Installation
- * Fixed the Panel and Tighten the Bolts
- * Applying Nosing into the prepared trench
- * Sealing the Bolt Holes with Sealant
- * Open to Traffic within 1-2 Hours



Others Product



Our Mission

To Work Closely With Customers As Business Partners.
To Provide Not Only Products But Total Business Solutions.
(Products, Technical Support And Prices Competitiveness),
To Our Customer

Our Vision

To Achieve International Recognition As
A Manufacturer And Supplier Of
High Quality Rubber Products And
To Be Customers' First Choice Supplier.





LT RUBBER MANUFACTURING SDN. BHD. (745664-V)

Address : No 2, Lorong Sentosa,
Kawasan Perusahaan Sri Cheeding,
42700 Banting, Selangor. D.E. Malaysia.

Tel : +603-3191 2058

Email : deepaltr@yahoo.com
leesaionn@hotmail.com

Operation Hour : 8.30am - 5.30pm (Mon - Fri)

Production Hour : 24 Hours